

Hockey Statistics: From Raw Data to WOWY

DAVID JOHNSON

HOCKEYANALYSIS.COM AND PUCKALYTICS.COM

OTTAWA ANALYTICS CONFERENCE – FEBRUARY 7, 2015

My Background in Hockey Analytics




- Started HockeyAnalysis.com blog in 2005.
- Started posting salary cap charts for all teams (Leafs/Sens probably much earlier) in spring/summer 2006. (I was capgeek.com before capgeek.com)
- Added Player and Team Rankings to HockeyAnalysis.com in Fall 2006.
- In 2008 stats.hockeyanalysis.com became new home for my hockey statistics.
- Started posting WOWY's and against opponent stats in fall 2008.
- Stats.hockeyanalysis.com overhauled in 2010 into what you see now
- Fall 2014 created Puckalytics.com – more modern, user friendly UI.
- Areas of Research
 - Player evaluation
 - Value of Zone Starts, Quality of Competition/Teammates in player evaluation
 - Shot Quality (Player/Team shooting percentage talent, rush shots, etc.)

Where do you get your data from?

- After “What does xyz statistic mean?” and “Would it be possible to add xyz feature?” this is probably the most common question I get.
- The answer is NHL.com game sheets.
 - Event Summary (<http://www.nhl.com/scores/htmlreports/20142015/ES020727.HTM>)
 - Play by Play (<http://www.nhl.com/scores/htmlreports/20142015/PL020727.HTM>)
 - Home Team TOI shift tables (<http://www.nhl.com/scores/htmlreports/20142015/TH020727.HTM>)
 - Road Team TOI shift reports (<http://www.nhl.com/scores/htmlreports/20142015/TV020727.HTM>)





Event Summary

- I mostly only use this to get names and numbers of players who participated in the game to link with player numbers in play by play and shift tables.

VISITOR		Event Summary		HOME																			
	0				1																		
WASHINGTON CAPITALS Game 49 Away Game 26		Saturday, January 31, 2015 Attendance 21,286 at Centre Bell Start 1:08 EST, End 3:38 EST Game 0727 Final		MONTREAL CANADIENS Game 48 Home Game 24																			
SHOTS SUMMARY (Goals-Shots On Goal)																							
EV			PP		SH	TOT																	
0-25			0-11		0-6	0-38																	
5v5	5v4	5v3	4v5	4v4	4v3	3v5	3v4 3v3																
0-23	0-11	0-2																					
EV			PP		SH	TOT																	
1-20			0-4		0-6	1-30																	
5v5	5v4	5v3	4v5	4v4	4v3	3v5	3v4 3v3																
0-18	0-4	0-6		1-2																			
FACE-OFF SUMMARY (Face-offs Won-Face-offs Total / Percentage)																							
EV			PP		SH	TOT																	
18-35/51%			5-14/36%		0-8/0%	23-55/42%																	
EV			PP		SH	TOT																	
17-35/49%			6-8/100%		9-14/64%	32-55/58%																	
TEAM SUMMARY																							
WASHINGTON CAPITALS											TOI												
	G	A	P	+/-	PN	PIM	TOT	SHF	AVG	PP	SH	EV	S	A/B	MS	HT	GV	TK	BS	FW	FL	F%	
2 D NISKANEN, MATT				-1			23:10	29	00:47	01:52	03:28	17:50	2	2	2	1	3		2				
8 L OVECHKIN, ALEX				-1	1	2	25:18	24	01:03	07:57	00:00	17:21	8	1	1	5				0	1	0	
16 R FEHR, ERIC							12:37	23	00:32	00:00	02:25	10:12	2	2		2					1	6	14
19 C BACKSTROM, NICKLAS				-1			23:44	28	00:50	06:15	01:10	16:19	1	1		1				2	13	10	57
20 R BROUWER, TROY							16:29	21	00:47	06:03	01:47	08:39	1			2				1	2	5	29
21 C LAICH, BROOKS					1	2	15:13	25	00:36	03:38	01:13	10:22	4	1		5				3			
25 L CHIMERA, JASON							08:20	13	00:38	00:05	00:31	07:44											
27 D ALZNER, KARL							20:36	27	00:45	00:00	03:26	17:10	1	2			1			2			
38 D HILLEN, JACK							10:06	13	00:46	00:00	00:00	10:06								2			
42 R WARD, JOEL							17:40	25	00:42	04:05	01:32	12:03	4	2	2					2	1	67	
43 R WILSON, TOM					1	2	09:22	11	00:51	00:00	00:00	09:22		1		3							




Play by Play

- Tracks every event that occurs during the game.
 - Goals
 - Shots
 - Missed Shots
 - Blocked Shots
 - Face Offs
 - Penalties
 - Hits/giveaways/takeaways

		VISITOR		Play By Play		HOME		
			0				1	
		WASHINGTON CAPITALS Game 49 Away Game 26		Saturday, January 31, 2015 Attendance 21,286 at Centre Bell Start 1:08 EST; End 3:38 EST Game 0727 Final		MONTREAL CANADIENS Game 48 Home Game 24		
#	Per Str	Time: Elapsed Game	Event	Description	WSH On Ice	MTL On Ice		
1	1	0:00 20:00	PSTR	Period Start- Local time: 1:08 EST	19 83 8 44 74 70 C C L D D G	14 22 87 76 79 31 C R L D D G		
2	1	0:00 20:00	FAC	WSH won Neu. Zone - WSH #19 BACKSTROM vs MTL #14 PLEKANEC	19 83 8 44 74 70 C C L D D G	14 22 87 76 79 31 C R L D D G		
3	1	0:09 19:51	STOP	ICING	19 83 8 44 74 70 C C L D D G	14 22 87 76 79 31 C R L D D G		
4	1	0:10 19:50	FAC	WSH won Def. Zone - WSH #19 BACKSTROM vs MTL #14 PLEKANEC	19 83 8 44 74 70 C C L D D G	14 22 87 76 79 31 C R L D D G		
5	1	0:31 19:29	MISS	WSH #83 BEAGLE, Wrist, Wide of Net, Off. Zone, 11 ft.	19 83 8 44 74 70 C C L D D G	14 22 87 76 79 31 C R L D D G		
6	1	0:36 19:24	HIT	WSH #8 OVECHKIN HIT MTL #87 PACIORETTY, Off. Zone	19 83 8 44 74 70 C C L D D G	14 22 87 76 79 31 C R L D D G		
7	1	0:43 19:17	HIT	WSH #44 ORPIK HIT MTL #22 WEISE, Def. Zone	19 83 8 44 74 70 C C L D D G	27 51 22 28 55 31 C C R D D G		
8	1	0:53 19:07	STOP	OFFSIDE	21 83 8 2 27 70 C C L D D G	27 51 11 28 55 31 C C R D D G		
9	1	0:53 19:07	FAC	MTL won Neu. Zone - WSH #16 FEHR vs MTL #51 DESHARNAIS	21 16 42 2 27 70 C R R D D G	27 51 11 28 55 31 C C R D D G		
10	1	1:06 18:54	BLOCK	WSH #42 WARD BLOCKED BY MTL #28 BEAULIEU, Wrist, Def. Zone	21 16 42 2 27 70 C R R D D G	27 51 11 28 55 31 C C R D D G		
11	1	1:16 18:44	GIVE	MTL GIVEAWAY - #28 BEAULIEU, Def. Zone	21 16 42 2 27 70 C R R D D G	27 51 11 28 55 31 C C R D D G		
12	1	1:31 18:29	GIVE	MTL GIVEAWAY - #55 GONCHAR, Def. Zone	21 16 42 2 27 70 C R R D D G	27 51 11 28 55 31 C C R D D G		
13	1	1:50 18:16	SHOT	WSH ONGOAL - #21 LAICH, Tip-In, Off. Zone, 12 ft.	21 20 90 2 38 70 C R I D D G	81 8 28 28 55 31 C I L D D G		

TOI Shift Reports

- Allows us to determine who is on the ice at every moment of the game.
- When paired with play by play data we can track “on-ice” statistics
- Can calculate “per ice time” statistics such as CorsiFor/60 or CorsiAgainst/60.
- Can identify situations (5v5, 5v5close, 5v4, 4v5, with/without goalie pulled, etc.)
- Shift tables also used to track pairs of player on the ice for WOWY and “Against Opponent” statistics.

VISITOR		TOI Shift Report		HOME	
	0				1
WASHINGTON CAPITALS Game 49 Away Game 26		Saturday, January 31, 2015 Attendance 21,286 at Centre Bell Start 1:08 EST; End 3:38 EST Game 0727 Final		MONTREAL CANADIENS Game 48 Home Game 24	

MONTREAL CANADIENS						
8 PRUST, BRANDON						
Shift #	Per	Start of Shift Elapsed / Game	End of Shift Elapsed / Game	Duration	Event G=Goal P=Penalty	
1	1	1:47 / 18:13	2:32 / 17:28	00:45		
2	1	4:02 / 15:58	4:11 / 15:49	00:09	P	
3	1	4:51 / 15:09	5:33 / 14:27	00:42		
4	1	7:35 / 12:24	8:37 / 11:23	01:01		
5	1	8:55 / 11:05	9:28 / 10:32	00:33		
6	1	14:48 / 5:12	16:16 / 3:44	01:28	P	
7	1	19:26 / 0:34	20:00 / 0:00	00:34		
8	2	0:53 / 19:07	2:00 / 18:00	01:07		
9	2	7:32 / 12:28	9:21 / 10:39	01:49	P	
10	2	9:50 / 10:10	10:22 / 9:38	00:32		
11	2	17:41 / 2:19	18:16 / 1:44	00:35		
12	3	0:59 / 19:01	1:26 / 18:34	00:27		
13	3	1:44 / 18:16	2:10 / 17:50	00:26		
14	3	9:48 / 10:12	10:24 / 9:36	00:36		
15	3	15:42 / 4:18	16:19 / 3:41	00:37		
Per	SHF	AVG	TOI	EV TOT	PP TOT	SH TOT
1	7	00:44	05:12	03:28	00:09	01:35
2	4	01:00	04:03	02:11	00:00	01:52
3	4	00:31	02:06	01:13	00:00	00:53
TOT	15	00:45	11:21	06:52	00:09	04:20

11 GALLAGHER, BRENDAN						
Shift #	Per	Start of Shift Elapsed / Game	End of Shift Elapsed / Game	Duration	Event G=Goal P=Penalty	
1	1	0:51 / 19:09	1:47 / 18:13	00:56		
2	1	2:32 / 17:28	3:16 / 16:44	00:44		

Play by Play events

Face Off

2	1	EV	0:00 20:00	FAC	WSH won Neu. Zone - WSH #19 BACKSTROM vs MTL #14 PLEKANEC	19 83 8 44 74 70	14 22 67 76 79 31
						C C L D D G	C R L D D G

Shot

13	1	EV	1:50 18:10	SHOT	WSH ONGOAL - #21 LAICH, Tip-In, Off. Zone, 12 ft.	21 20 90 2 38 70	81 8 26 28 55 31
						C R L D D G	C L L D D G

Missed Shot

19	1	PP	4:10 15:50	MISS	MTL #60 THOMAS, Wrist, Wide of Net, Off. Zone, 63 ft.	83 16 27 74 70	81 8 60 28 55 31
						C R D D G	C L L D D G

Blocked Shot

10	1	EV	1:06 18:54	BLOCK	WSH #42 WARD BLOCKED BY MTL #28 BEAULIEU, Wrist, Def. Zone	21 16 42 2 27 70	27 51 11 28 55 31
						C R R D D G	C C R D D G

Goal

327	4	EV	3:08 1:52	GOAL	MTL #67 PACIORETTY(23), Tip-In, Off. Zone, 9 ft. Assists: #14 PLEKANEC(20); #76 SUBBAN(22)	19 8 2 44 70	14 67 76 79 31
						C L D D G	C L D D G

Most stats sites use this to track who is on the ice for an event while I use shift tables. Which is better? Depends. Shift tables for rate stats, the above for counts??

Common issues with NHL.com data

- All manually tracked data (pretty much everything really) subject to arena/scorer bias.
 - Hits, giveaways, takeaways, etc. are particularly bad but can affect shots totals and distances as well.
- Shift tables have missing shifts, particularly for goalies.
 - No goalie on ice for whole periods is most common
 - I have manually fixed a number of these
- Play by play missing shot type (wrist, slap, snap, etc.)
 - Somewhat frequent but still a very small percentage of shots
 - If shot is from a long distance and by a defenseman I'll often fix by assuming a slap shot.
- Change in spelling of name
 - Matthew vs Matt, Nicholas vs Nick, etc.
 - Have checks in my code to account for majority of these situations (if I catch them)
 - If you find different spellings in my database please let me know so I can fix them.

Types of Statistics

- **Team Statistics** – Goals, shots, shot attempts, face offs, etc. for and against a team.
- **Individual Statistics** – Goals, assists, points, shots, shot attempts, etc. by an individual player.
- **On-ice Statistics** – Team statistics but only for when the player is on the ice.
- **QoC/QoT Statistics** – Typically an average of all teammates (QoT) or opponents (QoC) statistics.

- **Counting Stats** – X goals, Y shots, etc.
- **/60** – A counting statistics but per 60 minutes of ice time. (production vs opportunity)
- **Percentage For** – Team and Individual on-ice statistics represented as percent of events for team divided by all events for+against. i.e. $GF\% = \text{Goals For Percentage} = \text{Goals For} / (\text{Goals For} + \text{Goals Against})$

- **Situational stats** – 5v5, 5v5 Close, 5v5 Tied, 5v5 home, 5v5 road, 5v5 leading, 5v5 trailing, 5v4 power play, 4v5 penalty kill, etc.

- ****The truth is, these really aren't advanced stats but rather regular stats that are combined and analyzed in new ways.****

Individual Stats

#	Player Name	Team	GP	TOI	G	A	FirstA	Points	Shots	iFenwick	iCorsi	ShPct	G/60	A/60	FirstA/60	Points/60	Shots/60	iFenwick/60	iCorsi/60	IGP	IAP	IPP
1	GETZLAF, RYAN	Anaheim	171	2464:08	40	78	52	118	285	386	489	14.04	0.97	1.90	1.27	2.87	6.94	9.40	11.91	27.6	53.8	81.4
2	CROSBY, SIDNEY	Pittsburgh	163	2523:40	40	79	53	119	350	470	569	11.43	0.95	1.88	1.26	2.83	8.32	11.17	13.53	27.0	53.4	80.4
3	PERRY, COREY	Anaheim	162	2296:00	54	49	33	103	366	511	645	14.75	1.41	1.28	0.86	2.69	9.56	13.35	16.86	39.1	35.5	74.6
4	HALL, TAYLOR	Edmonton	162	2433:19	33	73	43	106	360	480	640	9.17	0.81	1.80	1.06	2.61	8.88	11.84	15.78	28.7	63.5	92.2
5	BENN, JAMIE	Dallas	173	2407:04	42	61	33	103	389	543	710	10.80	1.05	1.52	0.82	2.57	9.70	13.54	17.70	31.1	45.2	76.3
6	SEGUIN, TYLER	Dallas	179	2552:17	52	57	41	109	454	611	757	11.45	1.22	1.34	0.96	2.56	10.67	14.36	17.80	35.9	39.3	75.2
7	TOEWS, JONATHAN	Chicago	174	2475:51	45	60	36	105	318	400	487	14.15	1.09	1.45	0.87	2.54	7.71	9.69	11.80	31.5	42.0	73.4
8	NASH, RICK	NY Rangers	158	2150:33	57	33	21	90	460	588	734	12.39	1.59	0.92	0.59	2.51	12.83	16.41	20.48	49.6	28.7	78.3
9	TARASENKO, VLADIMIR	St. Louis	153	1939:43	38	42	29	80	305	456	591	12.46	1.18	1.30	0.90	2.47	9.43	14.11	18.28	36.5	40.4	76.9
10	KANE, PATRICK	Chicago	167	2562:13	46	55	43	101	363	496	639	12.67	1.08	1.29	1.01	2.37	8.50	11.61	14.96	34.6	41.4	75.9
11	MALKIN, EVGENI	Pittsburgh	137	1985:14	29	49	30	78	243	341	431	11.93	0.88	1.48	0.91	2.36	7.34	10.31	13.03	28.2	47.6	75.7
12	JOHNSON, TYLER	Tampa Bay	147	1883:42	28	46	28	74	259	351	446	10.81	0.89	1.47	0.89	2.36	8.25	11.18	14.21	28.3	46.5	74.7
13	DUCHENE, MATT	Colorado	170	2495:34	36	62	43	98	345	473	598	10.43	0.87	1.49	1.03	2.36	8.29	11.37	14.38	30.3	52.1	82.4
14	STAMKOS, STEVEN	Tampa Bay	138	2087:04	46	35	25	81	278	415	524	16.55	1.32	1.01	0.72	2.33	7.99	11.93	15.06	43.4	33.0	76.4
15	PACIORETTY, MAX	Montreal	167	2254:08	49	38	22	87	440	617	797	11.14	1.30	1.01	0.59	2.32	11.71	16.42	21.21	41.9	32.5	74.4
16	MARCHAND, BRAD	Boston	173	2316:36	37	52	36	89	285	378	467	12.98	0.96	1.35	0.93	2.31	7.38	9.79	12.10	31.1	43.7	74.8
17	OKPOSO, KYLE	NY Islanders	165	2502:15	33	63	39	96	332	451	592	9.94	0.79	1.51	0.94	2.30	7.96	10.81	14.20	26.2	50.0	76.2
18	KESSEL, PHIL	Toronto	182	2830:24	52	56	36	108	439	598	818	11.85	1.10	1.19	0.76	2.29	9.31	12.68	17.34	37.7	40.6	78.3
19	VANEK, THOMAS	Minnesota	166	2310:02	30	58	41	88	306	410	541	9.80	0.78	1.51	1.06	2.29	7.95	10.65	14.05	26.3	50.9	77.2
20	PALAT, ONDREJ	Tampa Bay	144	1868:07	23	48	28	71	215	301	394	10.70	0.74	1.54	0.90	2.28	6.91	9.67	12.65	22.3	46.6	68.9
21	LADD, ANDREW	Winnipeg	179	2501:57	38	57	30	95	325	458	589	11.69	0.91	1.37	0.72	2.28	7.79	10.98	14.12	30.6	46.0	76.6
22	KUNITZ, CHRIS	Pittsburgh	169	2385:49	38	52	30	90	288	389	525	13.19	0.96	1.31	0.75	2.26	7.24	9.78	13.20	27.0	36.9	63.8
23	NEAL, JAMES	Nashville	144	1944:38	37	36	22	73	365	506	694	10.14	1.14	1.11	0.68	2.25	11.26	15.61	21.41	33.6	32.7	66.4
24	VORACEK, JAKUB	Philadelphia	182	2384:59	33	56	32	89	304	402	552	10.86	0.83	1.41	0.81	2.24	7.65	10.11	13.89	28.0	47.5	75.4
25	BERGERON, PATRICE	Boston	172	2298:24	36	49	27	85	376	524	661	9.57	0.94	1.28	0.70	2.22	9.82	13.68	17.26	31.9	43.4	75.2

2012-13, 2013-14 and 2014-15 Combined Statistics

On-ice Goal stats

#	Player Name	Team	GP	TOI	GF60	GA60	GF%	Sh%	Sv%	PDO	TMGF60	TMGA60	TMGF%	GF60 RelTM	GA60 RelTM	GF% RelTM	OppGF60	OppGA60	OppGF%	OZFO	DZFO	NZFO	TotFO	OZFO%	DZFO%	NZFO%
1	PALAT, ONDREJ	Tampa	144	1868:07	3.31	1.70	66.0	10.43	93.86	104.3	2.41	2.16	52.7	0.90	-0.46	13.4	2.26	2.27	49.9	589	499	711	1799	32.7	27.7	39.5
2	TARASENKO, VLADIMIR	St.Louis	153	1939:43	3.22	1.67	65.8	9.90	93.40	103.3	2.11	2.05	50.7	1.10	-0.38	15.1	2.28	2.23	50.5	699	441	628	1768	39.5	24.9	35.5
3	STEPAN, DEREK	NY_Rangers	166	2287:50	2.75	1.47	65.2	8.40	94.91	103.3	2.39	2.19	52.2	0.36	-0.72	13.0	2.28	2.28	50.0	810	699	873	2382	34.0	29.3	36.6
4	JOHNSON, TYLER	Tampa	147	1883:42	3.15	1.75	64.3	9.87	93.66	103.5	2.53	2.13	54.4	0.62	-0.37	9.9	2.26	2.28	49.7	582	527	696	1805	32.2	29.2	38.6
5	MARCHAND, BRAD	Boston	173	2316:36	3.08	1.74	64.0	8.69	93.33	102.0	2.15	2.01	51.7	0.93	-0.28	12.3	2.28	2.28	50.0	819	710	958	2487	32.9	28.5	38.5
6	TOEWS, JONATHAN	Chicago	174	2475:51	3.46	1.99	63.6	9.55	92.57	102.1	2.34	2.16	52.0	1.13	-0.17	11.5	2.32	2.23	51.0	904	611	1073	2588	34.9	23.6	41.5
7	KUNITZ, CHRIS	Pittsburgh	169	2385:49	3.55	2.09	62.9	10.67	92.52	103.2	2.23	2.37	48.5	1.32	-0.28	14.5	2.27	2.24	50.4	751	704	950	2405	31.2	29.3	39.5
8	BERGERON, PATRICE	Boston	172	2298:24	2.95	1.75	62.8	8.25	92.82	101.1	2.28	1.99	53.5	0.67	-0.24	9.3	2.30	2.29	50.1	811	991	981	2783	29.1	35.6	35.2
9	PERRY, COREY	Anaheim	162	2296:00	3.61	2.14	62.7	11.39	91.66	103.0	2.40	2.21	52.1	1.21	-0.07	10.7	2.26	2.23	50.3	734	732	809	2275	32.3	32.2	35.6
10	NASH, RICK	NY_Rangers	158	2150:33	3.21	1.93	62.5	9.03	93.60	102.6	2.25	2.00	52.9	0.96	-0.08	9.6	2.30	2.29	50.1	845	660	862	2367	35.7	27.9	36.4
11	HOSSA, MARIAN	Chicago	163	2194:16	2.95	1.83	61.7	8.51	93.12	101.6	2.90	2.26	56.2	0.05	-0.42	5.5	2.32	2.23	51.0	807	580	963	2350	34.3	24.7	41.0
12	CROSBY, SIDNEY	Pittsburgh	163	2523:40	3.52	2.21	61.4	10.31	92.07	102.4	2.15	2.25	48.9	1.37	-0.03	12.5	2.27	2.24	50.4	826	763	956	2545	32.5	30.0	37.6
13	NYQUIST, GUSTAV	Detroit	130	1622:36	2.59	1.63	61.4	8.76	94.22	103.0	2.18	2.07	51.3	0.41	-0.44	10.1	2.28	2.27	50.2	588	437	585	1610	36.5	27.1	36.3
14	LUCIC, MILAN	Boston	176	2534:15	2.89	1.82	61.3	8.85	93.88	102.7	2.39	2.04	53.9	0.50	-0.22	7.4	2.25	2.29	49.6	816	620	788	2224	36.7	27.9	35.4
15	ZUCCARELLO, MATS	NY_Rangers	139	1890:21	2.95	1.87	61.2	9.33	93.11	102.4	2.29	2.08	52.4	0.66	-0.21	8.8	2.24	2.27	49.6	645	476	636	1757	36.7	27.1	36.2
16	KREJCI, DAVID	Boston	158	2370:36	3.01	1.92	61.0	9.35	93.55	102.9	2.36	1.94	55.0	0.65	-0.01	6.1	2.25	2.29	49.5	770	678	740	2188	35.2	31.0	33.8
17	SEGUIN, TYLER	Dallas	179	2552:17	3.41	2.19	60.9	9.74	92.51	102.2	2.36	2.43	49.3	1.04	-0.25	11.6	2.28	2.24	50.5	885	711	1011	2607	33.9	27.3	38.8
18	GETZLAF, RYAN	Anaheim	171	2464:08	3.53	2.26	60.9	11.62	91.36	103.0	2.39	2.08	53.5	1.14	0.18	7.4	2.26	2.23	50.4	784	823	853	2460	31.9	33.5	34.7
19	SEDIN, HENRIK	Vancouver	168	2426:48	2.50	1.61	60.8	8.06	93.56	101.6	2.05	2.46	45.5	0.45	-0.85	15.4	2.31	2.25	50.6	924	637	909	2470	37.4	25.8	36.8
20	KREIDER, CHRIS	NY_Rangers	136	1703:31	2.68	1.73	60.8	8.39	94.08	102.5	2.40	2.00	54.5	0.28	-0.28	6.3	2.27	2.26	50.1	595	436	613	1644	36.2	26.5	37.3
21	PACIORETTY, MAX	Montreal	167	2254:08	3.11	2.02	60.6	9.61	92.78	102.4	2.12	2.13	49.9	0.99	-0.11	10.7	2.26	2.26	50.0	809	596	870	2275	35.6	26.2	38.2
22	BELESKEY, MATT	Anaheim	148	1670:07	2.91	1.90	60.5	10.11	93.23	103.3	2.53	2.14	54.2	0.38	-0.23	6.2	2.22	2.21	50.0	552	507	582	1641	33.6	30.9	35.5
23	NEAL, JAMES	Nashville	144	1944:38	3.39	2.22	60.4	9.80	92.19	102.0	2.38	2.22	51.8	1.01	0.00	8.7	2.26	2.24	50.2	754	513	661	1928	39.1	26.6	34.3
24	SAAD, BRANDON	Chicago	175	2294:49	3.19	2.09	60.4	9.33	92.17	101.5	2.63	2.07	56.0	0.56	0.02	4.5	2.27	2.22	50.5	805	553	905	2263	35.6	24.4	40.0
25	KOPITAR, ANZE	Los_Angeles	177	2517:14	2.65	1.74	60.3	7.61	92.79	100.4	2.00	2.03	49.6	0.64	-0.29	10.7	2.31	2.25	50.6	860	738	910	2508	34.3	29.4	36.3

2012-13, 2013-14 and 2014-15 Combined Statistics

On-ice Shot stats

#	Player Name	Team	GP	TOI	SF60	SA60	SF%	Sh%	Sv%	PDO	TMSF60	TMSA60	TMSF%	SF60 RelTM	SA60 RelTM	SF% RelTM	OppSF60	OppSA60	OppSF%	OZFO	DZFO	NZFO	TotFO	OZFO%	DZFO%	NZFO%
1	BERGERON, PATRICE	Boston	172	2298:24	35.74	24.36	59.5	8.25	92.82	101.1	29.19	29.91	49.4	6.54	-5.56	10.1	29.11	29.34	49.8	811	991	981	2783	29.1	35.6	35.2
2	KOPITAR, ANZE	Los_Angeles	177	2517:14	34.75	24.12	59.0	7.61	92.79	100.4	29.78	26.38	53.0	4.97	-2.26	6.0	28.97	28.58	50.3	860	738	910	2508	34.3	29.4	36.3
3	WILLIAMS, JUSTIN	Los_Angeles	180	2430:01	34.62	24.35	58.7	7.35	92.60	99.9	29.26	26.17	52.8	5.35	-1.82	5.9	28.89	28.66	50.2	861	694	893	2448	35.2	28.3	36.5
4	MARCHAND, BRAD	Boston	173	2316:36	35.48	26.00	57.7	8.69	93.33	102.0	29.61	27.72	51.6	5.87	-1.71	6.1	29.04	29.24	49.8	819	710	958	2487	32.9	28.5	38.5
5	TOEWS, JONATHAN	Chicago	174	2475:51	36.28	26.75	57.6	9.55	92.57	102.1	31.49	27.49	53.4	4.79	-0.74	4.2	28.96	28.59	50.3	904	611	1073	2588	34.9	23.6	41.5
6	PARISE, ZACH	Minnesota	158	2311:37	33.09	25.15	56.8	7.61	91.95	99.6	26.93	27.67	49.3	6.16	-2.52	7.5	29.22	28.53	50.6	907	534	896	2337	38.8	22.8	38.3
7	HOSSA, MARIAN	Chicago	163	2194:16	34.70	26.63	56.6	8.51	93.12	101.6	33.26	27.40	54.8	1.44	-0.76	1.7	28.95	28.54	50.3	807	580	963	2350	34.3	24.7	41.0
8	KOIVU, MIKKO	Minnesota	163	2353:18	31.44	24.22	56.5	7.22	91.16	98.4	28.08	28.48	49.6	3.36	-4.26	6.8	29.19	28.62	50.5	945	611	914	2470	38.3	24.7	37.0
9	THORNTON, JOE	San_Jose	179	2455:45	33.35	25.78	56.4	8.57	91.85	100.4	29.69	29.19	50.4	3.66	-3.42	6.0	28.92	28.53	50.3	916	984	898	2798	32.7	35.2	32.1
10	STEEN, ALEXANDER	St.Louis	157	2194:36	32.75	25.32	56.4	8.93	91.90	100.8	27.93	26.24	51.6	4.83	-0.92	4.8	29.22	28.70	50.4	771	779	826	2376	32.4	32.8	34.8
11	TARASENKO, VLADIMIR	St.Louis	153	1939:43	32.51	25.30	56.2	9.90	93.40	103.3	27.60	26.44	51.1	4.91	-1.14	5.2	29.08	28.67	50.4	699	441	628	1768	39.5	24.9	35.5
12	SAAD, BRANDON	Chicago	175	2294:49	34.20	26.72	56.1	9.33	92.17	101.5	32.66	27.01	54.7	1.54	-0.29	1.4	28.73	28.65	50.1	805	553	905	2263	35.6	24.4	40.0
13	BICKELL, BRYAN	Chicago	158	1786:51	33.04	25.89	56.1	7.22	91.83	99.0	31.90	27.32	53.9	1.14	-1.43	2.2	28.20	28.59	49.7	634	330	569	1533	41.4	21.5	37.1
14	BROWN, DUSTIN	Los_Angeles	176	2341:48	31.51	24.73	56.0	6.42	92.44	98.9	30.96	25.80	54.5	0.55	-1.08	1.5	28.83	28.70	50.1	805	704	868	2377	33.9	29.6	36.5
15	SEDIN, DANIEL	Vancouver	170	2440:31	31.35	24.71	55.9	7.45	92.94	100.4	28.52	29.59	49.1	2.82	-4.88	6.8	29.01	28.53	50.4	938	637	936	2511	37.4	25.4	37.3
16	KING, DWIGHT	Los_Angeles	174	2190:35	30.95	24.57	55.8	6.11	92.31	98.4	30.19	25.94	53.8	0.76	-1.37	2.0	28.74	28.71	50.0	692	607	769	2068	33.5	29.4	37.2
17	TATAR, TOMAS	Detroit	142	1642:27	30.80	24.62	55.6	8.90	92.43	101.3	28.77	27.63	51.0	2.03	-3.01	4.6	28.60	29.06	49.6	580	401	510	1491	38.9	26.9	34.2
18	BURROWS, ALEX	Vancouver	141	1779:35	32.03	25.73	55.5	7.68	91.48	99.2	28.80	28.32	50.4	3.23	-2.59	5.0	28.95	28.66	50.2	690	493	650	1833	37.6	26.9	35.5
19	SHARP, PATRICK	Chicago	147	2098:51	35.02	28.16	55.4	8.57	91.17	99.7	32.11	26.82	54.5	2.91	1.34	0.9	28.72	28.66	50.0	803	444	747	1994	40.3	22.3	37.5
20	DATSYUK, PAVEL	Detroit	132	1930:56	30.82	24.80	55.4	8.77	91.85	100.6	28.46	28.43	50.0	2.37	-3.63	5.4	29.03	29.03	50.0	663	494	627	1784	37.2	27.7	35.1
21	SEDIN, HENRIK	Vancouver	168	2426:48	30.98	24.97	55.4	8.06	93.56	101.6	29.25	29.02	50.2	1.73	-4.05	5.2	29.04	28.47	50.5	924	637	909	2470	37.4	25.8	36.8
22	PERRY, COREY	Anaheim	162	2296:00	31.67	25.69	55.2	11.39	91.66	103.0	27.91	28.82	49.2	3.76	-3.13	6.0	28.97	28.52	50.4	734	732	809	2275	32.3	32.2	35.6
23	SMITH, REILLY	Boston	170	2071:50	31.77	25.92	55.1	8.93	92.63	101.6	31.41	27.98	52.9	0.36	-2.06	2.2	28.90	28.92	50.0	715	631	846	2192	32.6	28.8	38.6
24	CROSBY, SIDNEY	Pittsburgh	163	2523:40	34.12	27.89	55.0	10.31	92.07	102.4	27.75	28.65	49.2	6.37	-0.76	5.8	28.95	28.86	50.1	826	763	956	2545	32.5	30.0	37.6
25	BACKES, DAVID	St.Louis	172	2433:22	30.16	24.68	55.0	8.67	92.31	101.0	29.20	26.91	52.0	0.95	-2.23	2.9	29.29	28.70	50.5	744	950	962	2656	28.0	35.8	36.2

2012-13, 2013-14 and 2014-15 Combined Statistics

On-ice Fenwick stats (shots + missed shots)

#	Player Name	Team	GP	TOI	FF60	FA60	FF%	FSH%	FSv%	FPDO	TMFF60	TMFA60	TMFF%	FF60 RelTM	FA60 RelTM	FF% RelTM	OppFF60	OppFA60	OppFF%	OZFO	DZFO	NZFO	TotFO	OZFO%	DZFO%	NZFO%
1	BERGERON, PATRICE	Boston	172	2298:24	49.86	33.13	60.1	5.92	94.72	100.6	41.16	40.69	50.3	8.71	-7.56	9.8	40.46	40.79	49.8	811	991	981	2783	29.1	35.6	35.2
2	KOPITAR, ANZE	Los_Angeles	177	2517:14	49.86	33.77	59.6	5.31	94.85	100.2	42.96	37.53	53.4	6.90	-3.75	6.2	40.41	39.93	50.3	860	738	910	2508	34.3	29.4	36.3
3	WILLIAMS, JUSTIN	Los_Angeles	180	2430:01	49.43	33.90	59.3	5.14	94.68	99.8	42.30	37.38	53.1	7.14	-3.48	6.2	40.27	40.02	50.2	861	694	893	2448	35.2	28.3	36.5
4	MARCHAND, BRAD	Boston	173	2316:36	49.47	35.25	58.4	6.23	95.08	101.3	41.84	37.94	52.4	7.63	-2.69	5.9	40.36	40.62	49.8	819	710	958	2487	32.9	28.5	38.5
5	TOEWS, JONATHAN	Chicago	174	2475:51	47.40	34.82	57.6	7.31	94.29	101.6	42.43	37.09	53.4	4.97	-2.27	4.3	40.49	40.02	50.3	904	611	1073	2588	34.9	23.6	41.5
6	TARASENKO, VLADIMIR	St.Louis	153	1939:43	46.71	35.02	57.1	6.89	95.23	102.1	39.00	36.53	51.6	7.71	-1.51	5.5	40.40	39.96	50.3	699	441	628	1768	39.5	24.9	35.5
7	THORNTON, JOE	San_Jose	179	2455:45	48.13	36.26	57.0	5.94	94.20	100.1	41.95	41.04	50.5	6.18	-4.78	6.5	40.31	39.85	50.3	916	984	898	2798	32.7	35.2	32.1
8	HOSSA, MARIAN	Chicago	163	2194:16	45.97	35.08	56.7	6.42	94.78	101.2	44.12	36.49	54.7	1.85	-1.41	2.0	40.51	39.90	50.4	807	580	963	2350	34.3	24.7	41.0
9	TATAR, TOMAS	Detroit	142	1642:27	43.22	33.17	56.6	6.34	94.38	100.7	39.34	36.68	51.7	3.87	-3.51	4.8	39.71	40.41	49.6	580	401	510	1491	38.9	26.9	34.2
10	SEDIN, DANIEL	Vancouver	170	2440:31	43.91	33.71	56.6	5.32	94.82	100.1	40.11	41.16	49.4	3.80	-7.45	7.2	40.43	39.89	50.3	938	637	936	2511	37.4	25.4	37.3
11	SAAD, BRANDON	Chicago	175	2294:49	45.62	35.38	56.3	6.99	94.09	101.1	43.44	36.21	54.5	2.19	-0.83	1.8	40.12	40.05	50.0	805	553	905	2263	35.6	24.4	40.0
12	KOIVU, MIKKO	Minnesota	163	2353:18	43.37	33.76	56.2	5.23	93.66	98.9	38.74	40.24	49.0	4.63	-6.48	7.2	40.62	39.84	50.5	945	611	914	2470	38.3	24.7	37.0
13	BROWN, DUSTIN	Los_Angeles	176	2341:48	45.17	35.38	56.1	4.48	94.71	99.2	44.72	36.33	55.2	0.45	-0.94	0.9	40.15	40.05	50.1	805	704	868	2377	33.9	29.6	36.5
14	DATSYUK, PAVEL	Detroit	132	1930:56	42.97	33.81	56.0	6.29	94.03	100.3	39.30	37.77	51.0	3.67	-3.96	5.0	40.30	40.45	49.9	663	494	627	1784	37.2	27.7	35.1
15	BICKELL, BRYAN	Chicago	158	1786:51	43.92	34.62	55.9	5.43	93.89	99.3	42.82	36.92	53.7	1.10	-2.30	2.2	39.36	39.92	49.6	634	330	569	1533	41.4	21.5	37.1
16	SEDIN, HENRIK	Vancouver	168	2426:48	43.44	34.29	55.9	5.75	95.31	101.1	40.95	40.04	50.6	2.49	-5.75	5.3	40.51	39.79	50.4	924	637	909	2470	37.4	25.8	36.8
17	STEEN, ALEXANDER	St.Louis	157	2194:36	46.59	36.85	55.8	6.28	94.44	100.7	39.45	36.75	51.8	7.14	0.11	4.1	40.56	39.96	50.4	771	779	826	2376	32.4	32.8	34.8
18	BURROWS, ALEX	Vancouver	141	1779:35	44.47	35.37	55.7	5.53	93.80	99.3	40.44	39.09	50.8	4.03	-3.72	4.9	40.39	40.07	50.2	690	493	650	1833	37.6	26.9	35.5
19	PAVELSKI, JOE	San_Jose	183	2528:35	47.05	37.44	55.7	5.45	95.37	100.8	43.12	39.76	52.0	3.94	-2.32	3.7	40.25	39.89	50.2	929	962	869	2760	33.7	34.9	31.5
20	PARISE, ZACH	Minnesota	158	2311:37	45.37	36.10	55.7	5.55	94.39	99.9	37.40	38.36	49.4	7.97	-2.26	6.3	40.63	39.75	50.5	907	534	896	2337	38.8	22.8	38.3
21	KING, DWIGHT	Los_Angeles	174	2190:35	44.34	35.36	55.6	4.26	94.66	98.9	43.90	36.67	54.5	0.45	-1.31	1.1	40.05	40.05	50.0	692	607	769	2068	33.5	29.4	37.2
22	ZAJAC, TRAVIS	New_Jersey	171	2466:50	39.01	31.18	55.6	5.24	93.68	98.9	36.06	35.28	50.5	2.96	-4.10	5.0	40.76	40.70	50.0	783	728	876	2387	32.8	30.5	36.7
23	SMITH, REILLY	Boston	170	2071:50	44.19	35.45	55.5	6.42	94.61	101.0	44.26	38.30	53.6	-0.07	-2.85	1.9	40.16	40.21	50.0	715	631	846	2192	32.6	28.8	38.6
24	CARTER, JEFF	Los_Angeles	171	2190:55	48.61	39.13	55.4	5.24	93.91	99.2	42.92	35.90	54.4	5.69	3.23	0.9	40.36	40.05	50.2	807	642	770	2219	36.4	28.9	34.7
25	SHARP, PATRICK	Chicago	147	2098:51	46.71	37.71	55.3	6.43	93.40	99.8	42.73	35.78	54.4	3.98	1.93	0.9	40.11	40.03	50.0	803	444	747	1994	40.3	22.3	37.5

2012-13, 2013-14 and 2014-15 Combined Statistics

On-ice Corsi Stats (Shots + missed shots + blocked shots)

#	Player Name	Team	GP	TOI	CF60	CA60	CF%	CSH%	CSV%	CPDO	TMCF60	TMCA60	TMCF%	CF60 RelTM	CA60 RelTM	CF% RelTM	OppCF60	OppCA60	OppCF%	OZFO	DZFO	NZFO	TotFO	OZFO%	DZFO%	NZFO%
1	BERGERON, PATRICE	Boston	172	2298:24	66.59	43.86	60.3	4.43	96.01	100.4	55.89	54.13	50.8	10.70	-10.28	9.5	54.64	54.92	49.9	811	991	981	2783	29.1	35.6	35.2
2	KOPITAR, ANZE	Los_Angeles	177	2517:14	66.10	43.62	60.2	4.00	96.01	100.0	57.71	48.94	54.1	8.38	-5.32	6.1	54.59	54.18	50.2	860	738	910	2508	34.3	29.4	36.3
3	WILLIAMS, JUSTIN	Los_Angeles	180	2430:01	65.16	43.06	60.2	3.90	95.81	99.7	56.99	49.24	53.6	8.17	-6.18	6.6	54.40	54.28	50.0	861	694	893	2448	35.2	28.3	36.5
4	MARCHAND, BRAD	Boston	173	2316:36	66.07	46.34	58.8	4.66	96.25	100.9	56.74	50.80	52.8	9.33	-4.46	6.0	54.50	54.64	49.9	819	710	958	2487	32.9	28.5	38.5
5	TOEWS, JONATHAN	Chicago	174	2475:51	63.78	46.05	58.1	5.43	95.68	101.1	57.95	50.47	53.4	5.83	-4.43	4.6	54.56	54.17	50.2	904	611	1073	2588	34.9	23.6	41.5
6	TATAR, TOMAS	Detroit	142	1642:27	58.85	42.85	57.9	4.66	95.65	100.3	51.23	47.85	51.7	7.62	-5.00	6.2	53.64	54.50	49.6	580	401	510	1491	38.9	26.9	34.2
7	DATSYUK, PAVEL	Detroit	132	1930:56	58.32	43.19	57.5	4.64	95.32	100.0	51.42	49.04	51.2	6.90	-5.85	6.3	54.40	54.61	49.9	663	494	627	1784	37.2	27.7	35.1
8	HOSSA, MARIAN	Chicago	163	2194:16	62.67	46.57	57.4	4.71	96.07	100.8	59.43	49.38	54.6	3.24	-2.81	2.8	54.62	54.02	50.3	807	580	963	2350	34.3	24.7	41.0
9	THORNTON, JOE	San_Jose	179	2455:45	67.07	50.26	57.2	4.26	95.82	100.1	57.58	57.18	50.2	9.49	-6.92	7.0	54.31	53.80	50.2	916	984	898	2798	32.7	35.2	32.1
10	SEDIN, DANIEL	Vancouver	170	2440:31	59.91	44.97	57.1	3.90	96.12	100.0	54.55	56.18	49.3	5.36	-11.21	7.9	54.57	53.94	50.3	938	637	936	2511	37.4	25.4	37.3
11	BROWN, DUSTIN	Los_Angeles	176	2341:48	60.80	45.89	57.0	3.33	95.92	99.3	59.32	47.29	55.6	1.48	-1.40	1.4	54.25	54.30	50.0	805	704	868	2377	33.9	29.6	36.5
12	TARASENKO, VLADIMIR	StLouis	153	1939:43	61.93	47.08	56.8	5.19	96.45	101.6	52.05	50.76	50.6	9.88	-3.68	6.2	54.56	54.02	50.2	699	441	628	1768	39.5	24.9	35.5
13	SMITH, REILLY	Boston	170	2071:50	60.76	46.25	56.8	4.67	95.87	100.5	59.58	51.30	53.7	1.18	-5.05	3.0	54.19	54.17	50.0	715	631	846	2192	32.6	28.8	38.6
14	SEDIN, HENRIK	Vancouver	168	2426:48	59.49	45.64	56.6	4.20	96.48	100.7	55.33	54.90	50.2	4.15	-9.25	6.4	54.67	53.80	50.4	924	637	909	2470	37.4	25.8	36.8
15	SAAD, BRANDON	Chicago	175	2294:49	61.57	47.25	56.6	5.18	95.57	100.8	58.87	48.99	54.6	2.71	-1.74	2.0	54.08	54.26	49.9	805	553	905	2263	35.6	24.4	40.0
16	BICKELL, BRYAN	Chicago	158	1786:51	59.90	46.47	56.3	3.98	95.45	99.4	57.96	49.82	53.8	1.94	-3.35	2.5	53.05	54.11	49.5	634	330	569	1533	41.4	21.5	37.1
17	ZAJAC, TRAVIS	New_Jersey	171	2466:50	51.88	40.42	56.2	3.94	95.13	99.1	48.94	46.52	51.3	2.94	-6.10	4.9	55.10	54.95	50.1	783	728	876	2387	32.8	30.5	36.7
18	SHARP, PATRICK	Chicago	147	2098:51	63.66	49.71	56.1	4.71	95.00	99.7	57.63	48.39	54.4	6.04	1.33	1.8	54.13	54.17	50.0	803	444	747	1994	40.3	22.3	37.5
19	CARTER, JEFF	Los_Angeles	171	2190:55	64.63	50.55	56.1	3.94	95.29	99.2	57.55	46.77	55.2	7.08	3.78	0.9	54.57	54.32	50.1	807	642	770	2219	36.4	28.9	34.7
20	KOIVU, MIKKO	Minnesota	163	2353:18	57.60	45.10	56.1	3.94	95.25	99.2	51.69	55.03	48.4	5.91	-9.93	7.6	54.84	53.91	50.4	945	611	914	2470	38.3	24.7	37.0
21	KING, DWIGHT	Los_Angeles	174	2190:35	58.92	46.56	55.9	3.21	95.94	99.1	58.74	47.60	55.2	0.18	-1.04	0.6	54.13	54.33	49.9	692	607	769	2068	33.5	29.4	37.2
22	JAGR, JAROMIR	New_Jersey	174	2584:05	53.82	42.84	55.7	4.66	95.12	99.8	50.21	48.60	50.8	3.61	-5.76	4.9	54.52	54.35	50.1	871	687	841	2399	36.3	28.6	35.1
23	SHAW, ANDREW	Chicago	176	2150:37	59.90	48.01	55.5	4.29	95.64	99.9	58.35	49.08	54.3	1.55	-1.07	1.2	53.33	54.25	49.6	781	449	628	1858	42.0	24.2	33.8
24	BURROWS, ALEX	Vancouver	141	1779:35	60.52	48.52	55.5	4.07	95.48	99.5	54.91	53.02	50.9	5.61	-4.50	4.6	54.51	54.16	50.2	690	493	650	1833	37.6	26.9	35.5
25	NEAL, JAMES	Nashville	144	1944:38	64.58	52.02	55.4	5.26	95.73	101.0	53.63	53.68	50.0	10.94	-1.66	5.4	54.65	54.23	50.2	754	513	661	1928	39.1	26.6	34.3

2012-13, 2013-14 and 2014-15 Combined Statistics

What is WOWY?

- WOWY is short for **W**ith **O**r **W**ithout **Y**ou
- Is a statistical analysis technique comparing statistics (on-ice or individual) when two players are on the ice together compared to when they are on the ice individually without the other.
- The theory of WOWY is:
 - If a players teammates generally perform better with him than apart from him that's good.
 - If a players teammates generally perform worse with him than apart from him that's bad.

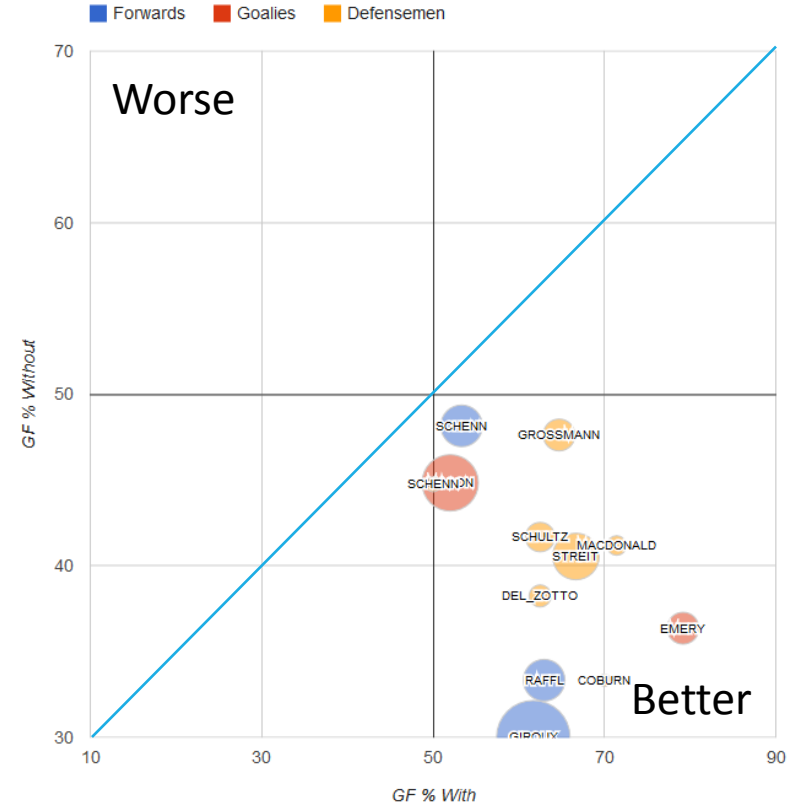
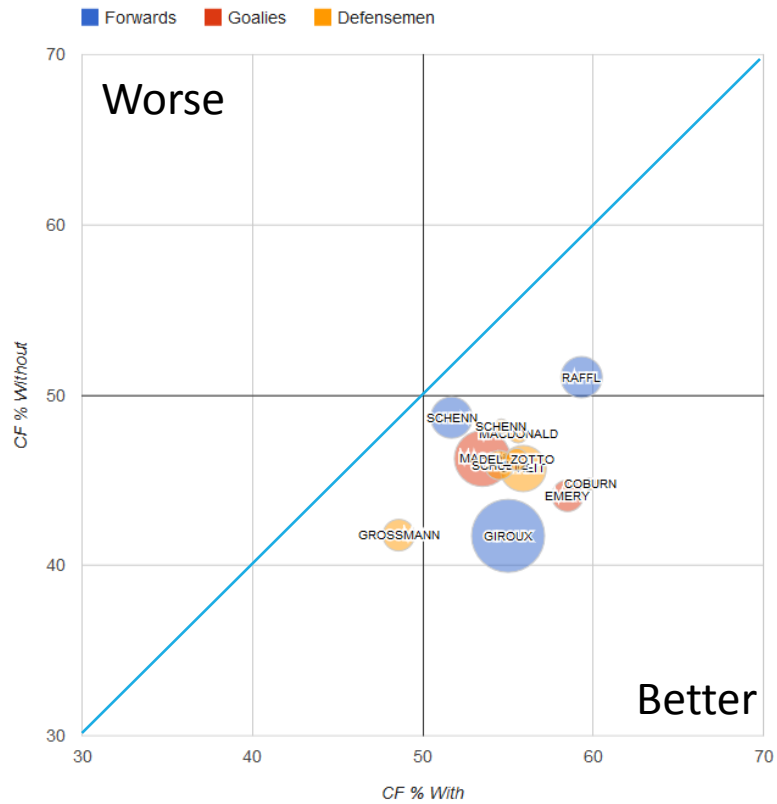
Jakub Voracek WOWY

VORACEK's 2014-15 5v5 Even Strength With You Statistics

[Visualize this table](#)

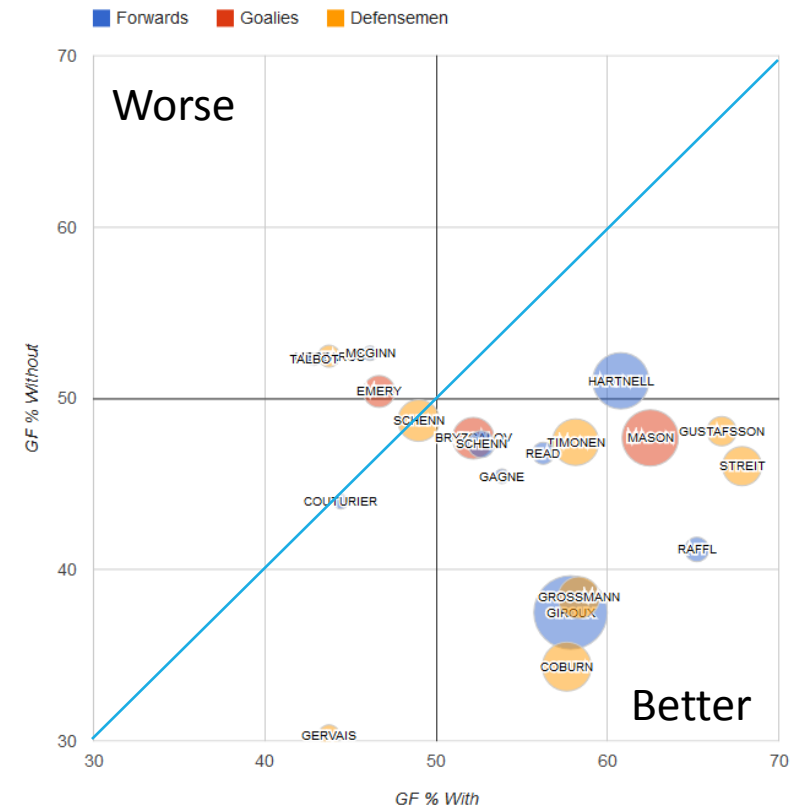
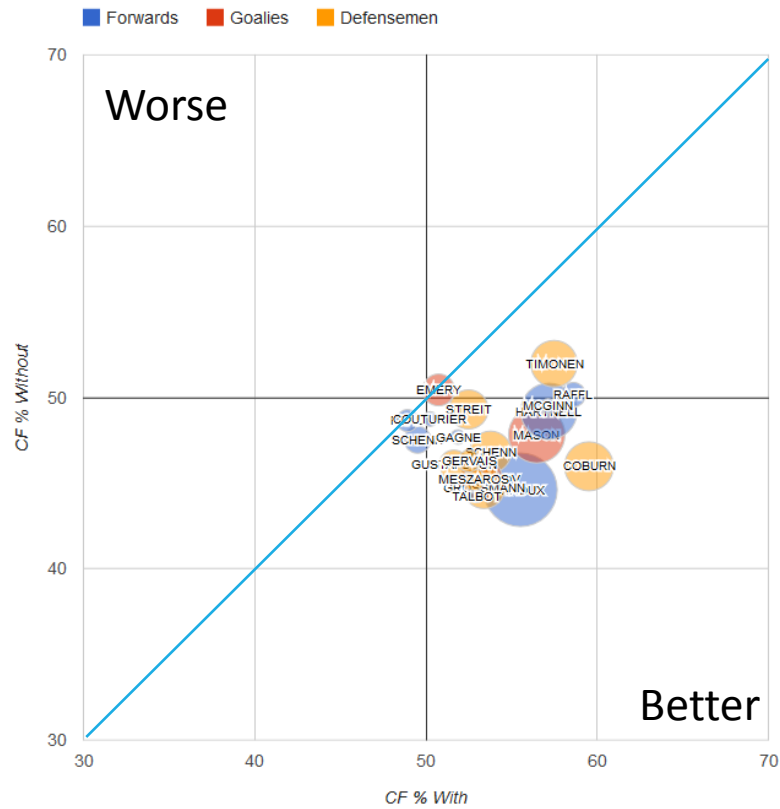
Player	Pos	VORACEK's Individual Stats With					When on ice Together							VORACEK when apart							Teammate when apart						
		Goals	Assists	Points	Shots	Corsi	TOI	GF20	GA20	GF%	CF20	CA20	CF%	TOI	GF20	GA20	GF%	CF20	CA20	CF%	TOI	GF20	GA20	GF%	CF20	CA20	CF%
VORACEK, JAKUB	R	8	21	29	83	156	701:23	0.970	0.542	64.2	20.27	16.85	54.6	0:00	0.000	0.000	0.0	0.00	0.00	0.0	0:00	0.000	0.000	0.0	0.00	0.00	0.0
GIROUX, CLAUDE	R	7	18	25	75	139	631:04	0.919	0.571	61.7	20.35	16.64	55.0	70:19	1.422	0.284	83.3	19.63	18.77	51.1	117:50	0.509	1.188	30.0	16.29	22.74	41.7
MASON, STEVE	G	5	6	11	46	86	421:49	0.616	0.569	52.0	19.91	17.31	53.5	279:34	1.502	0.501	75.0	20.82	16.17	56.3	999:42	0.520	0.640	44.8	16.18	18.79	46.3
STREIT, MARK	D	5	11	16	45	80	322:23	1.117	0.558	66.7	21.78	17.18	55.9	379:00	0.844	0.528	61.5	19.00	16.57	53.4	531:53	0.564	0.827	40.5	15.76	18.73	45.7
RAFFL, MICHAEL	L	6	10	16	49	82	285:24	1.191	0.701	63.0	22.07	15.14	59.3	415:59	0.817	0.433	65.4	19.04	18.03	51.4	215:23	0.464	0.929	33.3	18.01	17.27	51.1
SCHENN, BRAYDEN	C	0	7	7	29	60	279:13	0.573	0.501	53.3	19.70	18.41	51.7	422:10	1.232	0.569	68.4	20.66	15.82	56.6	395:37	0.657	0.708	48.1	17.74	18.70	48.7
GROSSMANN, NICKLAS	D	4	5	9	35	59	217:32	1.011	0.552	64.7	17.47	18.48	48.6	483:51	0.951	0.537	63.9	21.54	16.12	57.2	397:46	0.503	0.553	47.6	14.43	20.11	41.8
EMERY, RAY	G	2	15	17	34	56	212:28	1.788	0.471	79.2	22.03	15.63	58.5	488:55	0.614	0.573	51.7	19.51	17.39	52.9	529:29	0.604	1.058	36.4	15.64	19.83	44.1
SCHULTZ, NICK	D	2	7	9	21	35	199:13	1.004	0.602	62.5	20.08	16.77	54.5	502:10	0.956	0.518	64.9	20.35	16.89	54.7	550:58	0.544	0.762	41.7	15.83	18.66	45.9
DEL_ZOTTO, MICHAEL	D	2	6	8	18	39	171:10	1.169	0.701	62.5	21.73	17.41	55.5	530:13	0.905	0.490	64.9	19.80	16.67	54.3	465:33	0.558	0.902	38.2	17.10	19.89	46.2
MACDONALD, ANDREW	D	0	4	4	14	29	157:13	0.636	0.254	71.4	19.59	15.65	55.6	544:10	1.066	0.625	63.0	20.47	17.20	54.3	476:48	0.587	0.839	41.2	16.07	17.58	47.8
SCHENN, LUKE	D	1	4	5	14	33	144:58	0.828	0.828	50.0	21.25	17.66	54.6	556:25	1.006	0.467	68.3	20.02	16.64	54.6	467:02	0.728	0.899	44.7	18.03	19.40	48.2
COBURN, BRAYDON	D	1	5	6	13	20	135:14	1.035	0.444	70.0	19.37	13.01	59.8	566:09	0.954	0.565	62.8	20.49	17.77	53.6	359:44	0.445	0.889	33.3	15.07	18.57	44.8

Jakub Voracek WOWY



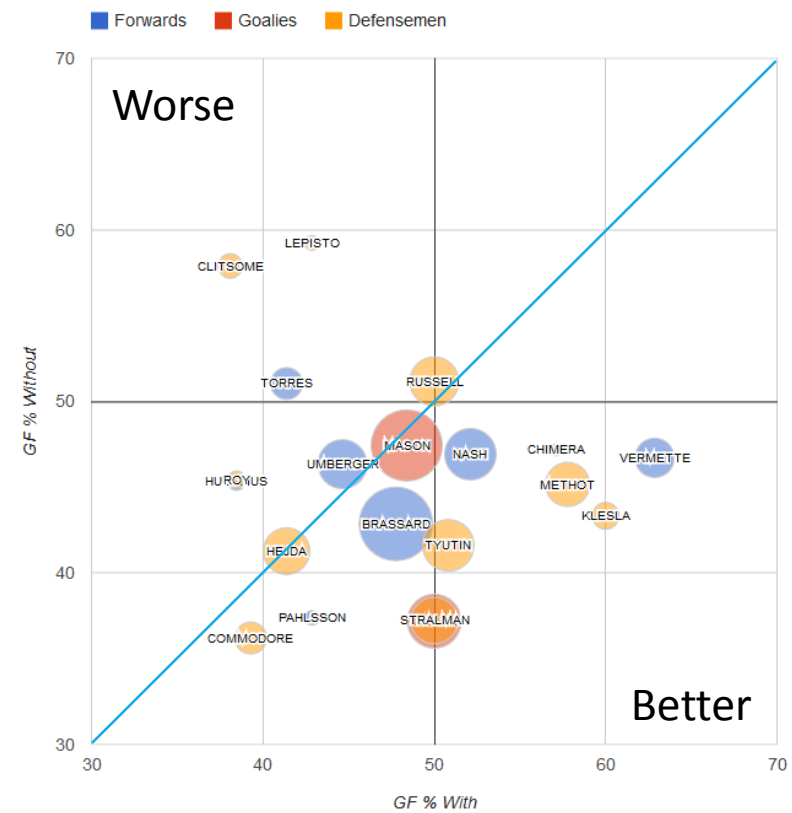
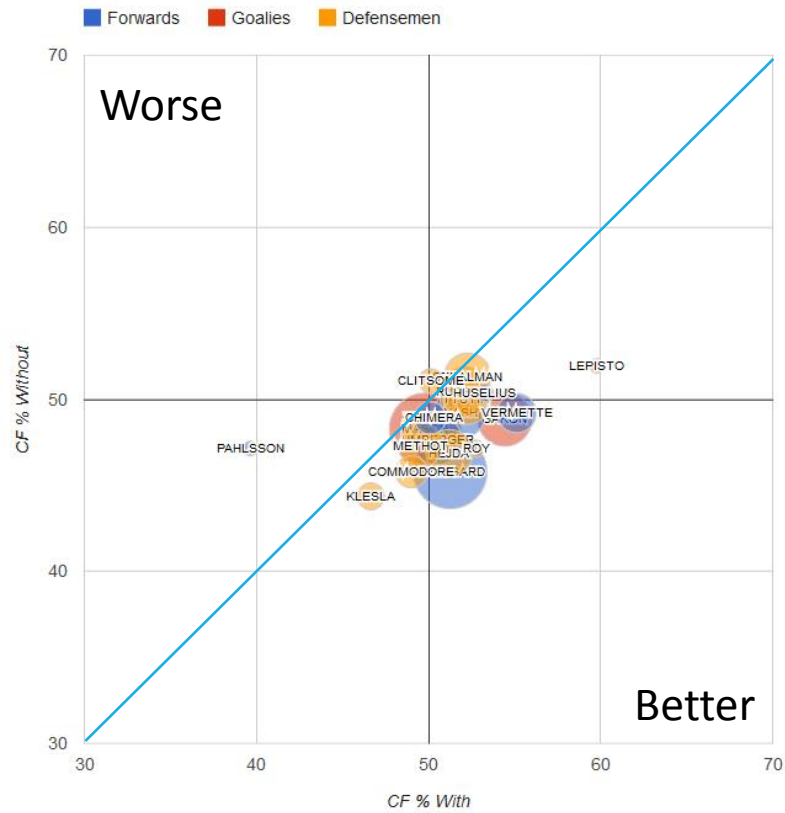
2014-15

Jakub Voracek WOWY



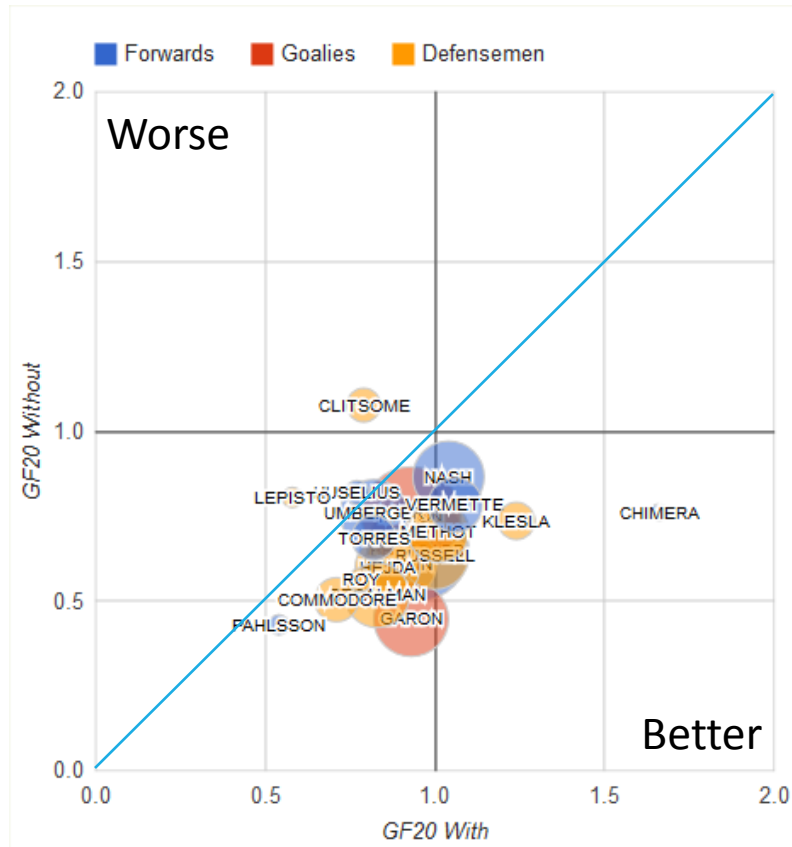
2012-14 (2yr)

Jakub Voracek WOWY

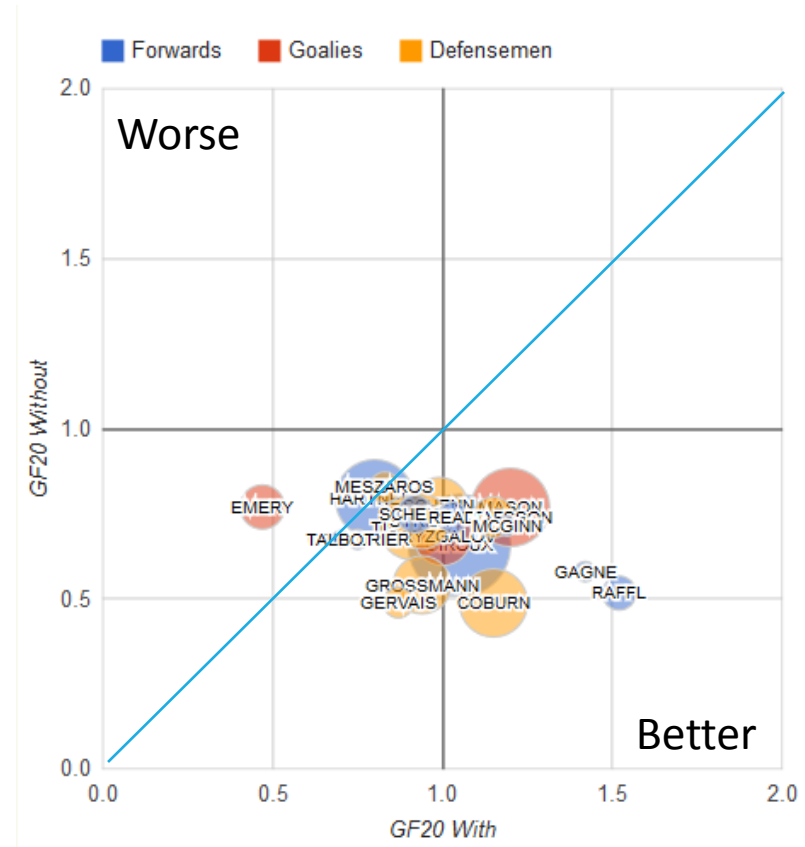


2009-11 (2yr)

Jakub Voracek GF20 WOWY



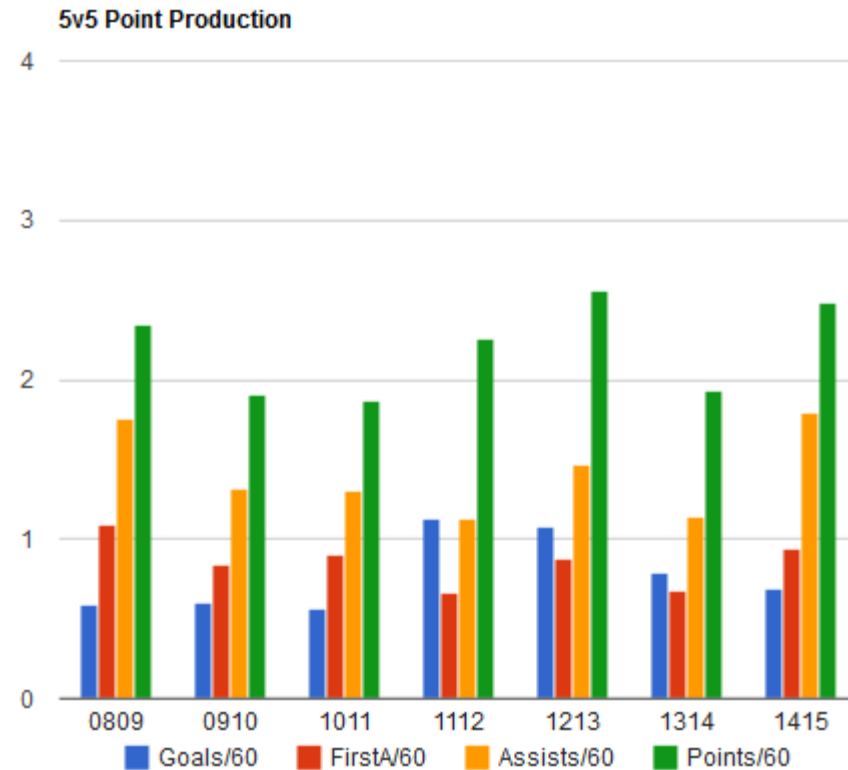
2009-11 (2yr)



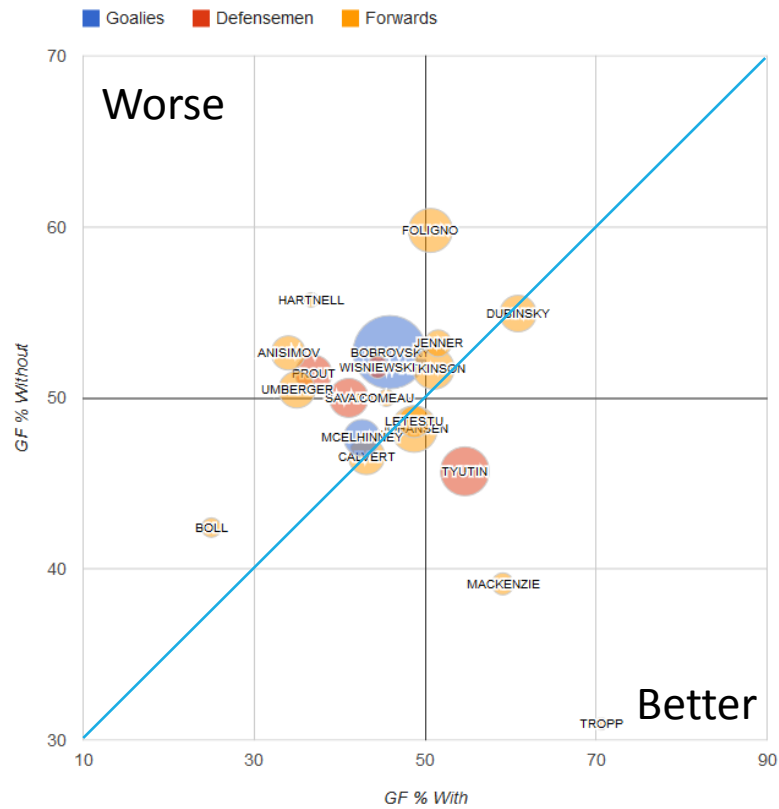
2012-14 (2yr)

Jakub Voracek – Did he get better?

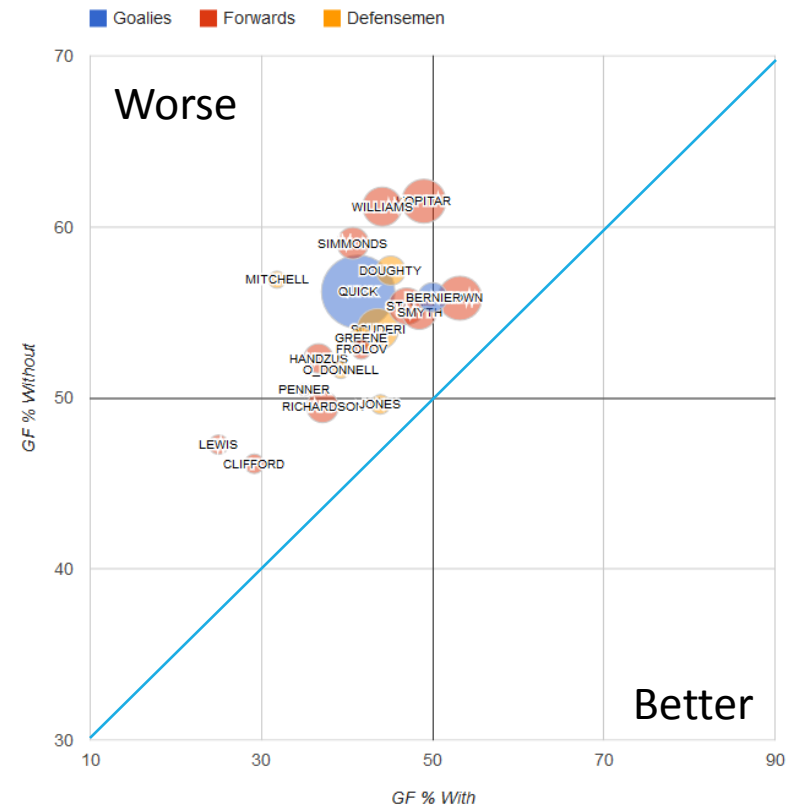
- Not really – He has always been really good.
- He has consistently helped his teammates perform better when with him than apart from him.
- His stats are better this year because of more opportunity, not a ‘break through’ season.
- More ice time = better individual stats



WOWY - Jack Johnson

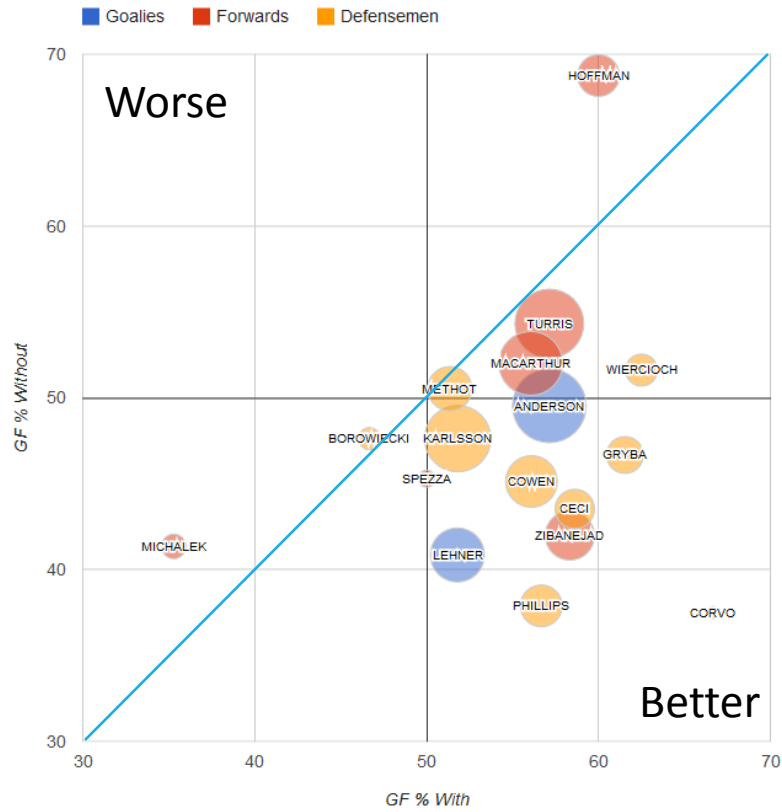


2012-15 (3yr - CBJ)

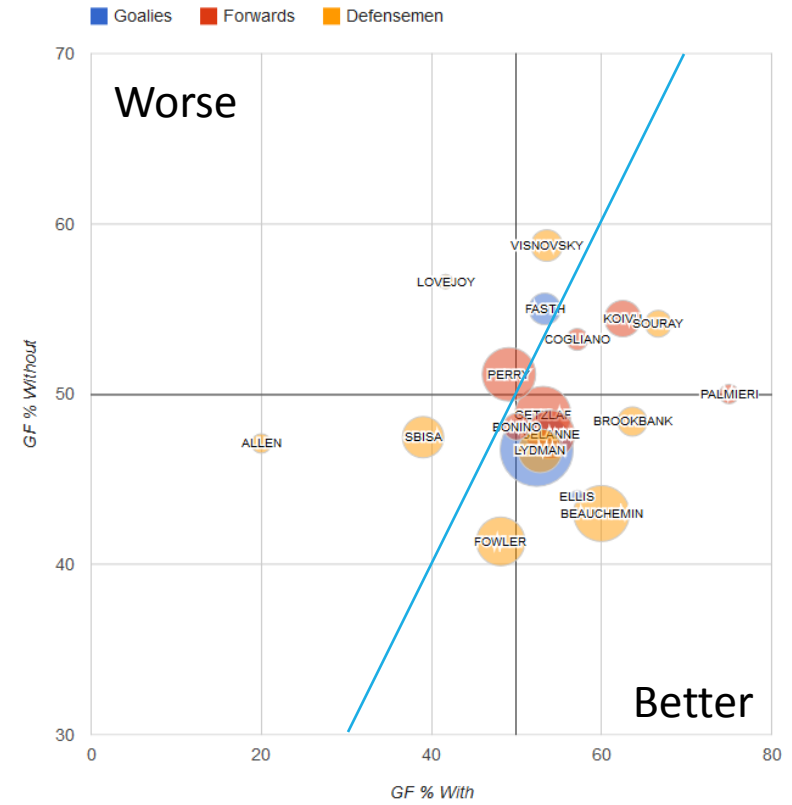


2009-12 (3yr - Kings)

WOWY - Bobby Ryan

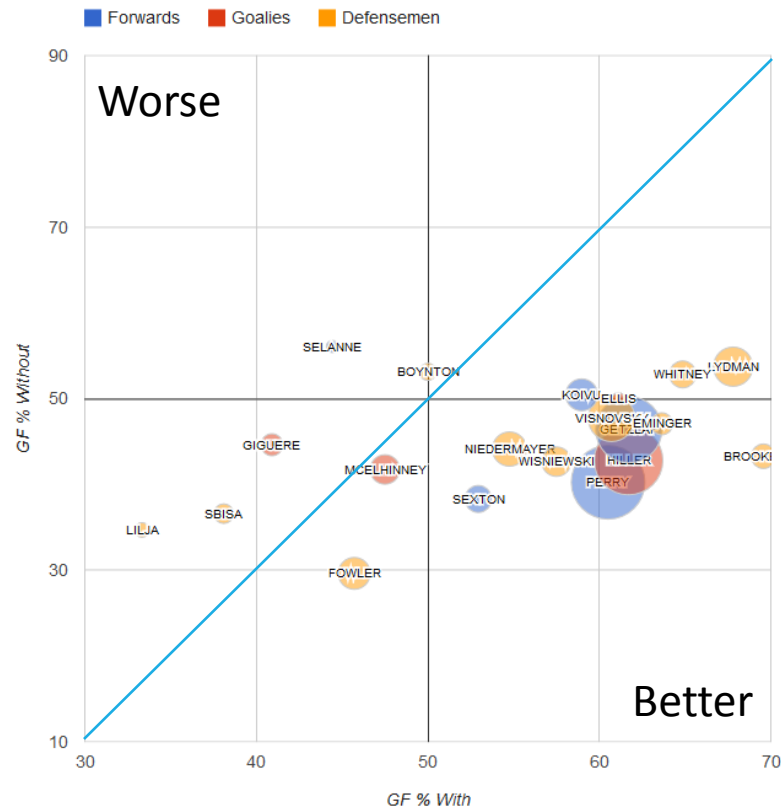


2013-15 (2yr - Senators)



2011-13 (2yr - Ducks)

WOWY - Bobby Ryan cont'd



2009-11 (2yr - Ducks)

That's a lot of stats

At last count my database had

1,065,759,063

data points in it.

(WOWY and 'Against You' stats mostly to blame)

Online Resources

- Blog: www.hockeyanalysis.com
- Stats Site #1: stats.hockeyanalysis.com
- Stats Site #2: www.puckalytics.com
- Twitter: @hockeyanalysis
- E-mail: david@hockeyanalysis.com
- Intro to Advanced Stats: <http://mapleleafshotstove.com/2014/08/05/introduction-to-advanced-statistics/>
- WOWY Analysis Guide: <http://mapleleafshotstove.com/2014/09/29/wowys/>

Thank-you!!