

# Ice Position

Micah Blake McCurdy  
micah@hockeyviz.com

Ottawa ON  
Ottawa Hockey Analytics Conference  
January 16, 2016

# The Idea

Can players affect their team results by gaining or losing territory?

# The Idea

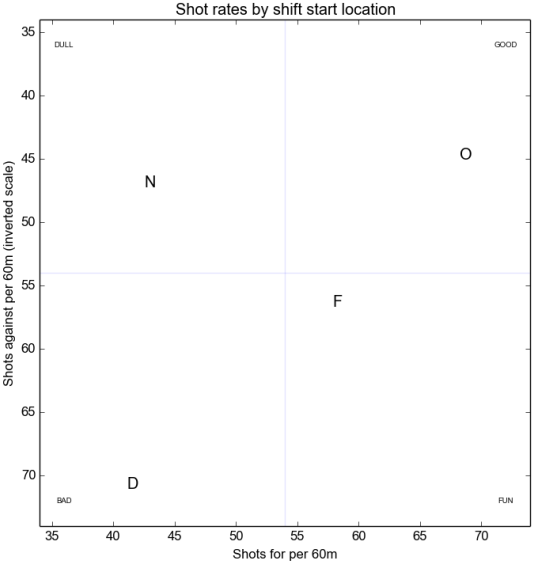
Can players affect their team results by gaining or losing territory?

- ▶ Not really.

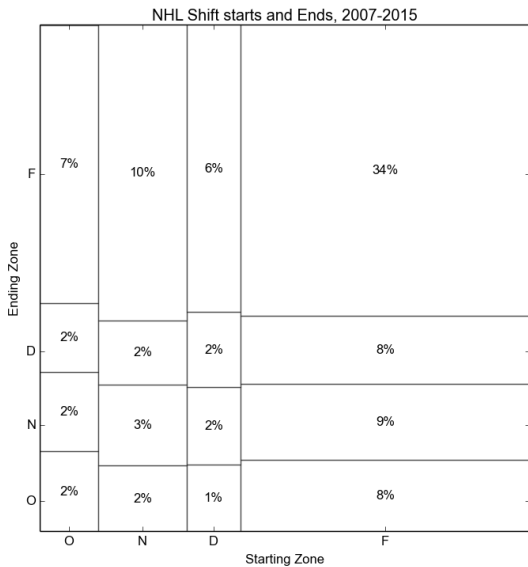
## Shift recap

- ▶ Some shifts start on faceoffs in OZ, NZ, or DZ.
- ▶ Some shifts start on-the-fly.
- ▶ Not every faceoff is a shift start.
- ▶ On-the-fly starts cannot be separated by previous puck location.

# Neutral zone faceoffs are boring



# On-the-fly dominates starts and ends

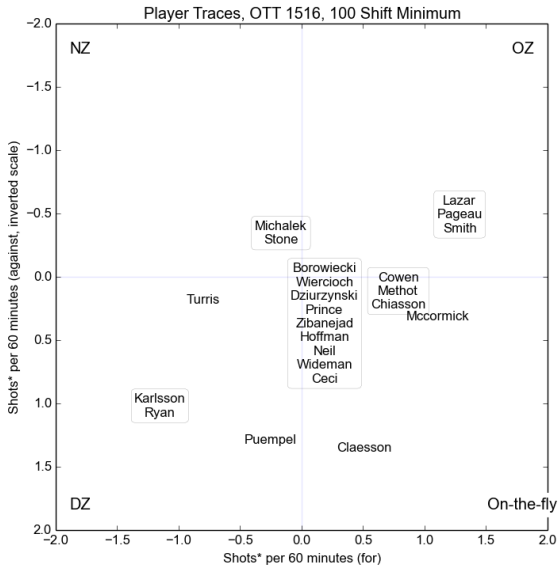


# Footprint

For each player we calculate a *footprint* by comparing

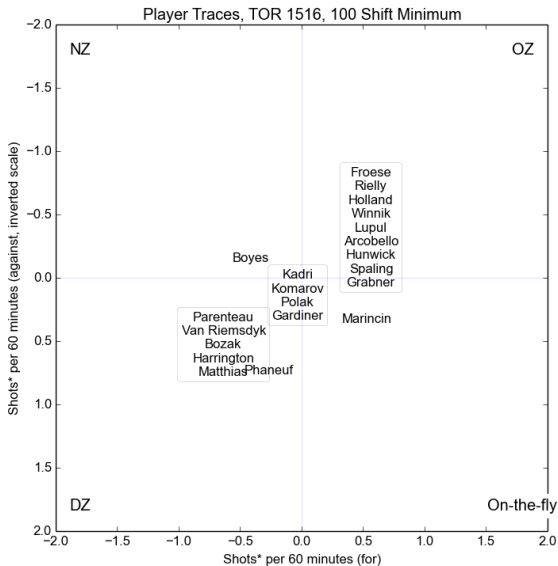
- ▶ Typical shot rate from shifts starting where a given player's shifts end; vs
- ▶ Typical shot rate from shifts starting where a typical team members's shifts *would* end if they were deployed like the player in question.

# Relative Footprint, Ottawa 2015-2016

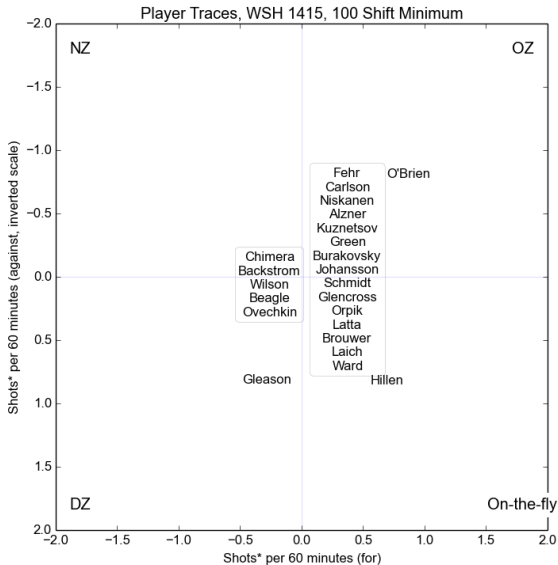




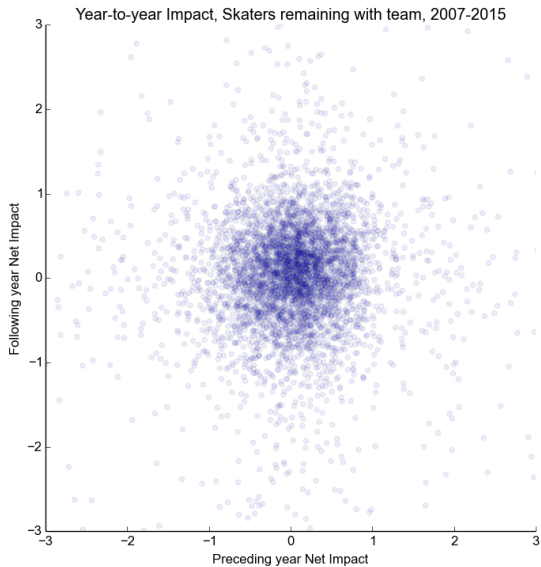
# Relative Footprint, Toronto 2015-2016



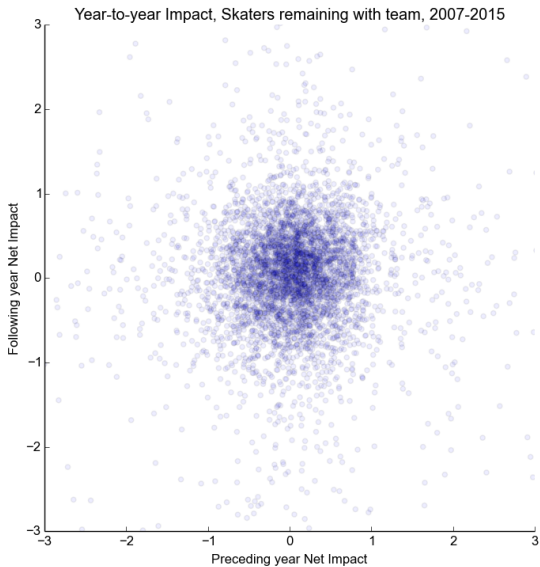
# Relative Footprint, Washington 2014-2015



# Team-relative year-to-year



# Team-relative year-to-year ( $r = -0.02$ )



Thanks!

